



Partners for Fish & Wildlife Program



Protecting Wildlife and Working Landscapes

The Partners for Fish and Wildlife (PFW) Program is a voluntary private lands habitat restoration program, that also provides financial and technical assistance.

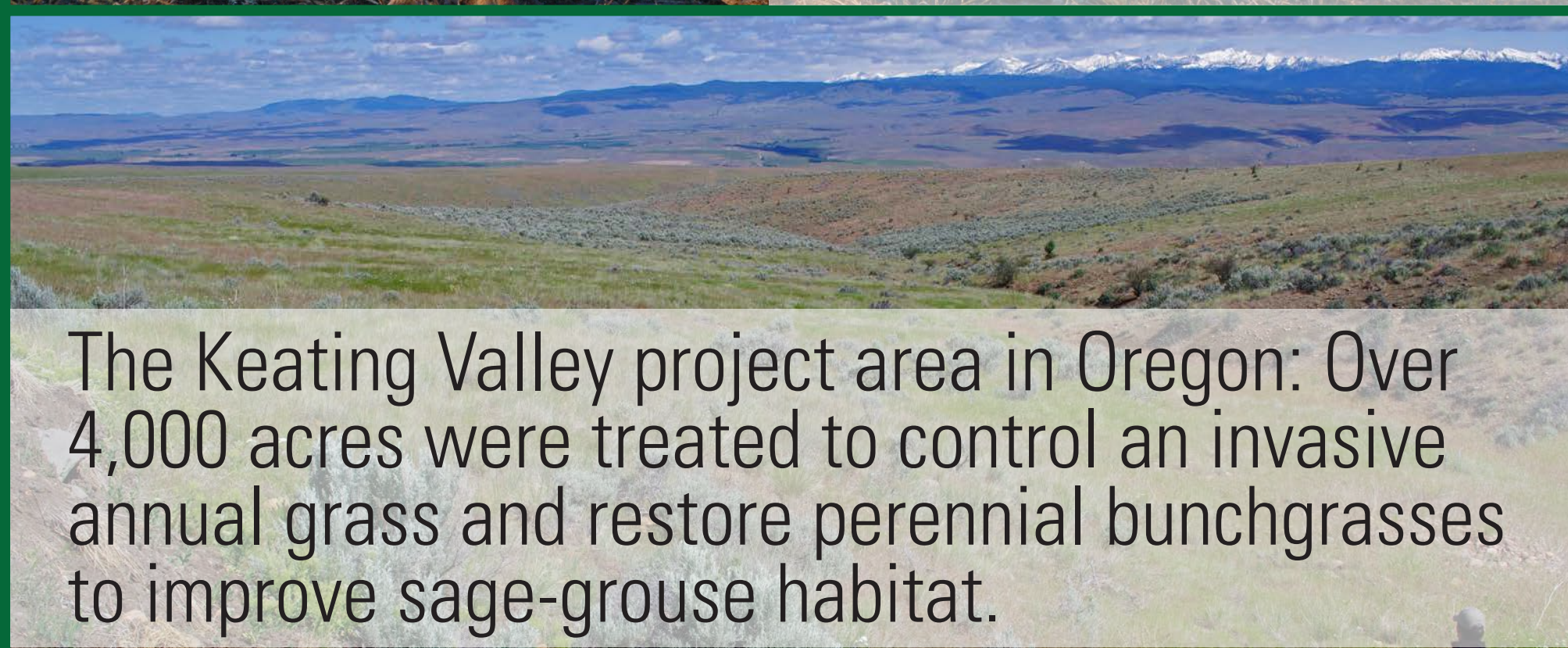
The Partners for Fish and Wildlife (PFW) Program has been working strategically on habitat delivery to benefit greater sage-grouse (GRSG) for over a decade. The program deploys a wide array of techniques to restore and enhance landscapes which support life-cycle requirements for the species. Sound science drives PFW conservation delivery and the program is adaptive which allows for agile alignment as new biological principals and findings are published. The community-based relationships, very central to the PFW model, are the foundation for building sustainable partnerships across the 11-state range (California, Colorado, Idaho, Montana, Nevada, North Dakota, Oregon, South Dakota, Utah, Washington, Wyoming) of the species.



Partnership in Montana on the Centennial Valley Sage Grouse Initiative project to implement a multi-year grazing plan across over 45,000 acres. Improving the health of the rangeland is good for wildlife as well as livestock.



"The partnerships and projects that our involvement with the PFW program have afforded us have been invaluable to me as a ranch manager. Much of our success in creating and enhancing GRSG habitat in the southern Great Basin can be laid at the feet of PFW and its people."
~ Duane Coombs, Nevada



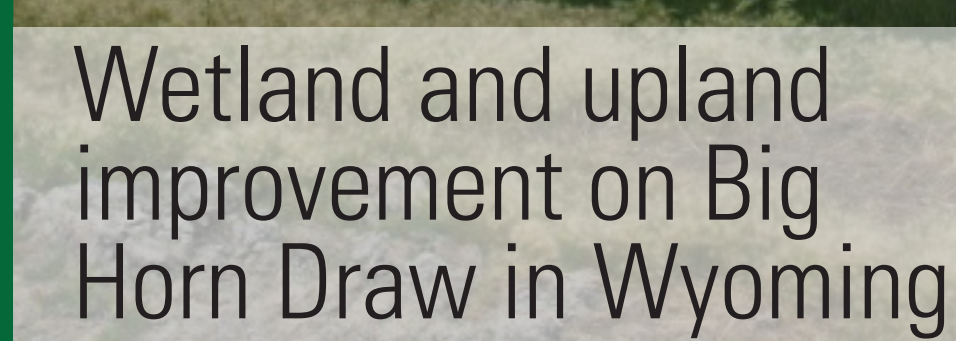
The Keating Valley project area in Oregon: Over 4,000 acres were treated to control an invasive annual grass and restore perennial bunchgrasses to improve sage-grouse habitat.



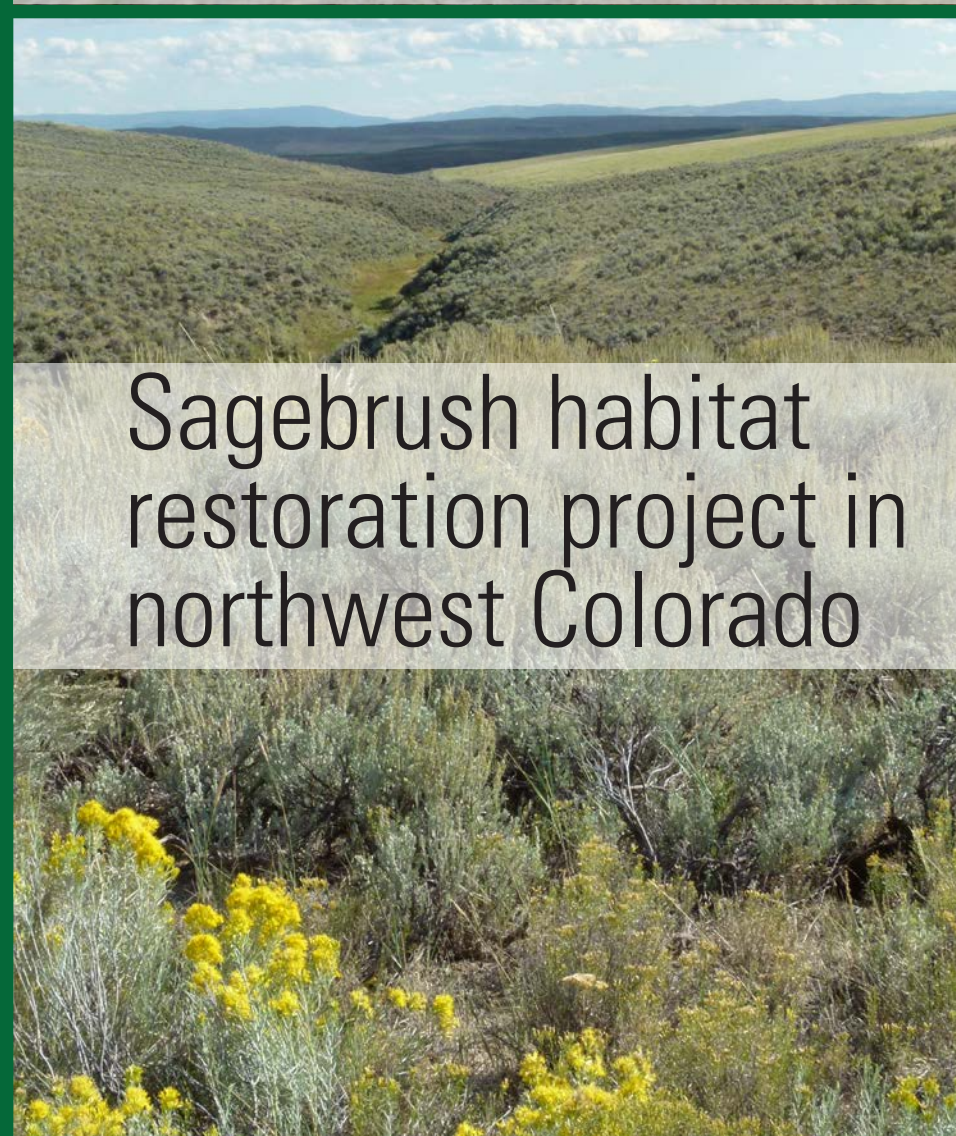
Wetland and upland improvement on Big Horn Draw in Wyoming



Sage-grouse utilizing wetland habitat in Wyoming



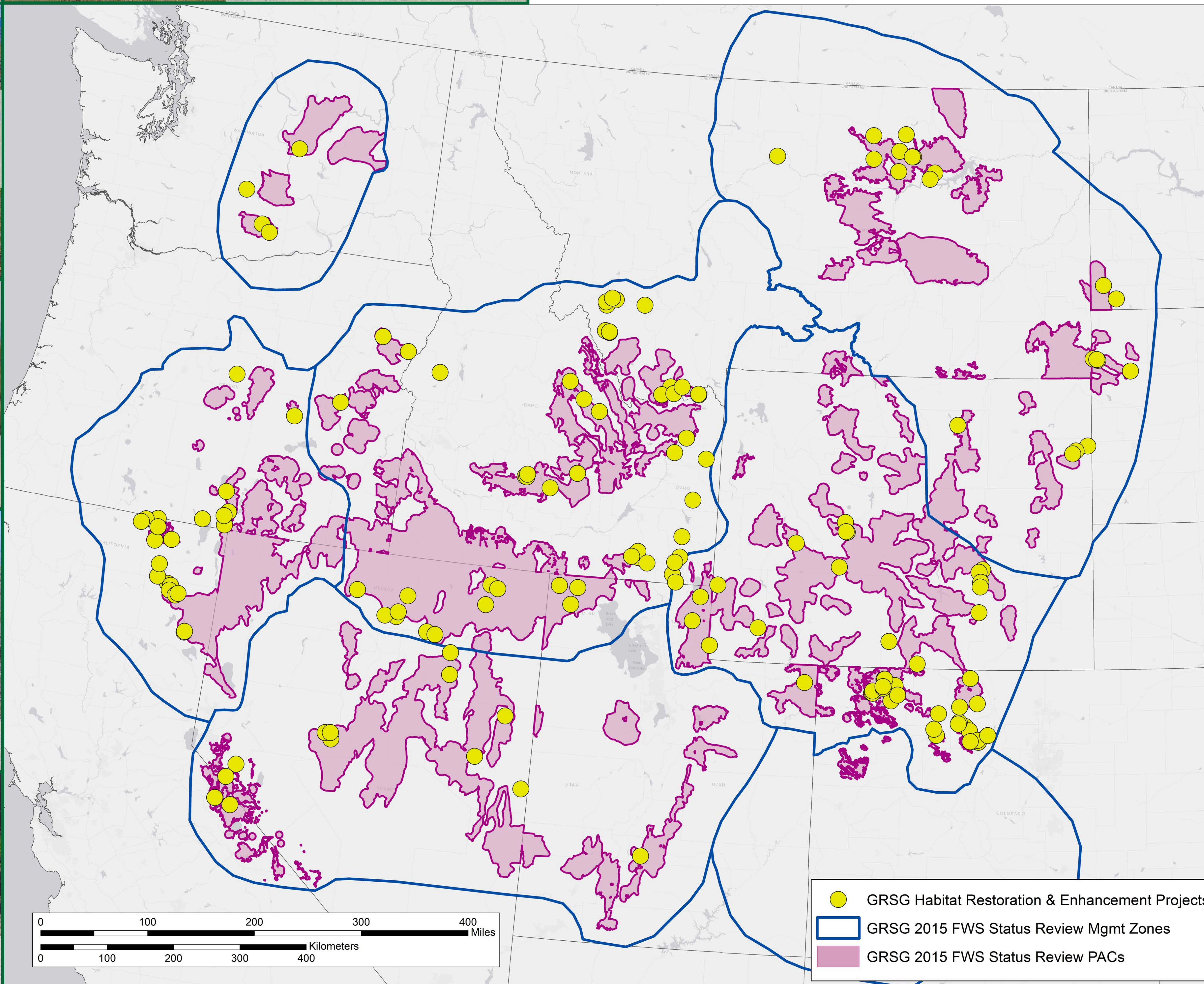
Sagebrush habitat restoration project in northwest Colorado



Piñon juniper removal in northwest Colorado



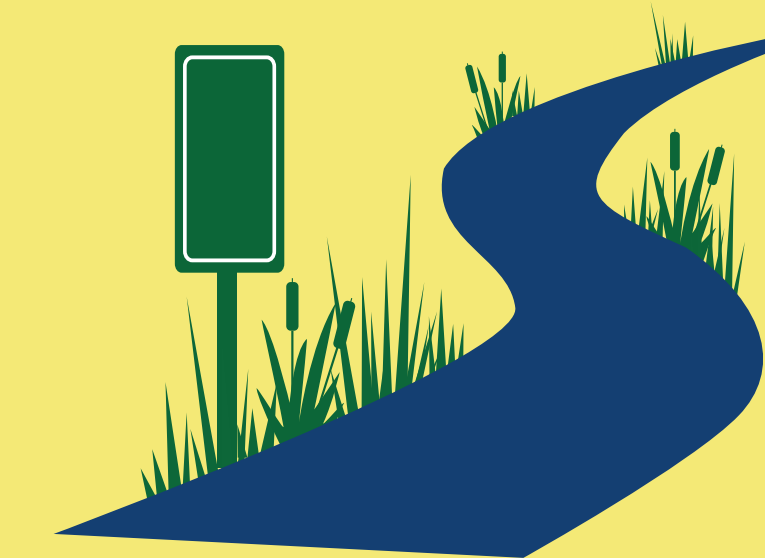
Riparian pasture fence protecting sage-grouse brood rearing habitat in Utah



NATIONAL PFW ACCOMPLISHMENTS FOR SAGE-GROUSE



326
Projects



131
Riparian Miles



7,000
Wetland Acres



270,000
Upland Acres

WHAT THE PFW PROGRAM DOES

20%

Technical Assistance

- Provide support for:
- private landowners
 - local working groups
 - Sage Grouse Initiative
 - Natural Resources Conservation Service
 - Farm Service Agency
 - National Wildlife Refuges
 - Tribes

80%

On-the-ground projects

- Upland restoration
- Wetland restoration
- Stream/riparian restoration